

QUARTERFINAL ROUND

PRP

vs.

Knott County Central

March 19, 1993

Official Boxscore *** FINAL ***

Date: 03-19-93 Site:BOYS STATE TOURNEY GAME 9

VISITORS (Last Name, First)

NO.	KNOTT COUNTY CENTRAL	Tot		3-POINT		FT		Rebounds		PF	TP	A	TO	BLK	S	TIME	
		FG	FGA	FG	FGA	FT	FTA	OFF	DEF								TOT
24	COUCH, RONDEL	3	9	0	2	0	0	1	1	2	3	6	1	4	1	0	20:59
44	SLONE, DAVID	2	4	0	0	0	0	1	1	2	0	4	0	0	0	0	22:51
04	CODY, GEOFF	4	6	0	0	2	2	1	4	5	4	10	0	2	1	0	24:54
12	COUCH, KEVIN	1	2	1	2	0	0	1	3	4	4	3	1	7	0	1	20:26
14	AMBURGEY, BYRON	2	6	1	2	0	0	1	3	4	2	5	2	7	0	1	16:01
34	HALL, SHAWN	0	0	0	0	0	0	0	0	0	2	0	1	0	1	0	5:17
20	GIBSON, RYAN	0	0	0	0	0	0	0	0	0	2	0	0	2	0	0	6:58
10	CRAFT, HAROLD	0	2	0	0	0	0	0	0	0	0	0	0	3	0	1	3:44
30	WILLIAMS, JARVIS	0	2	0	0	1	2	0	1	1	1	1	1	3	0	0	8:37
54	PARTIN, JEREMY	1	1	0	0	0	0	1	2	3	0	2	0	0	0	0	7:10
40	WATTS, AARON	0	0	0	0	0	0	0	1	1	2	0	1	4	0	1	5:46
22	SUMNER, BRIAN	2	3	2	2	0	0	0	0	0	0	6	0	1	0	0	4:38
42	CENTERS, SHAWN	2	4	0	0	3	4	2	0	2	2	7	1	0	0	2	6:55
32	PATRICK, ANTHONY	1	1	0	0	0	0	0	0	0	0	2	0	0	0	1	2:15
50	HALL, TODD	1	2	0	0	1	1	0	0	0	1	3	0	1	0	0	3:29
TEAM REBOUNDS (INCLUDED IN TOTALS)																	
TOTALS		19	42	4	8	7	12	9	16	25	22	49	8	35	3	7	160

TOTAL FG	1st HALF	5/12	41.7%	2nd HALF	14/30	46.7%	GAME	19/42	45.2%	DEADBALL	
3-POINT FG	1st HALF	1/3	33.3%	2nd HALF	3/5	60.0%	GAME	4/8	50.0%	REBOUNDS	5
FREE THROWS	1st HALF	0/2	0.0%	2nd HALF	7/10	70.0%	GAME	7/12	58.3%		

HOME (Last Name, First)

NO.	PLEASURE RIDGE PARK	Tot		3-POINT		FT		Rebounds		PF	TP	A	TO	BLK	S	TIME	
		FG	FGA	FG	FGA	FT	FTA	OFF	DEF								TOT
30	MACKLIN, DANYELL	6	9	1	3	6	8	3	5	8	2	19	1	1	2	3	19:04
34	LYNVILLE, MATT	4	8	0	0	3	5	4	4	8	0	11	2	0	0	4	21:05
24	KELLY, RAMONE	7	12	1	4	3	3	1	1	2	0	18	4	0	0	3	17:56
12	STANDARD, D.	2	5	0	2	0	2	1	0	1	3	4	0	4	0	1	20:04
15	TAYLOR, CHARLIE	2	6	1	4	0	0	0	2	2	2	5	8	1	0	1	16:52
25	WELLS, STEVE	2	3	0	0	1	3	0	1	1	1	5	3	2	0	1	12:32
33	ALEXANDER, CRAIG	1	4	0	1	3	3	3	1	4	1	5	0	0	0	1	12:42
20	RICKETTS, JASON	0	3	0	2	0	0	1	0	1	1	0	1	1	0	3	8:22
22	HAMILTON, ERIC	2	3	0	1	4	6	3	0	3	0	8	0	0	0	2	5:25
42	LOCKHART, MIREE	1	2	0	0	0	0	0	0	0	2	2	0	2	0	0	6:00
23	ASHFORD, GOLDIE	1	3	0	1	2	2	1	0	1	2	4	1	1	0	1	6:55
45	SCHLATTER, JASON	0	1	0	0	0	0	1	1	2	0	0	0	0	0	0	2:47
43	HOOVER, SHAWN	0	0	0	0	0	0	0	0	0	1	0	0	0	1	0	3:37
21	HIMMS, LARON	0	1	0	1	1	2	0	0	0	0	1	0	2	0	0	3:37
31	MITCHELL, JAMES	0	2	0	0	0	0	3	1	4	1	0	0	3	0	0	3:02
TEAM REBOUNDS (INCLUDED IN TOTALS)																	
TOTALS		28	62	3	19	23	34	22	16	38	16	82	20	17	3	20	160

TOTAL FG	1st HALF	6/14	42.9%	2nd HALF	22/48	45.8%	GAME	28/62	45.2%	DEADBALL	
3-POINT FG	1st HALF	2/5	40.0%	2nd HALF	1/14	7.1%	GAME	3/19	15.8%	REBOUNDS	5
FREE THROWS	1st HALF	3/4	75.0%	2nd HALF	20/30	66.7%	GAME	23/34	67.6%		

OFFICIALS: C.B. AKINS, CURTIS KING, ALT-GLENN BROWN
 Technicals: None

SCORE BY PERIODS					
KNOTT COUNTY CENTRAL	11	11	6	21	= 49
PLEASURE RIDGE PARK	17	23	21	21	= 82

Attendance: 11,745

COMMENTS: POINTS OFF TURNOVERS
 KNOTT COUNTY CENTRAL 18 PLEASURE RIDGE PARK 48 | KNOTT COUNTY CENTRAL 12 PLEASURE RIDGE PARK 17

KNOTT COUNTY CENTRAL "PATRIOTS" vs PLEASURE RIDGE PARK "PANTHERS"
1st Half Play by Play

Tip off at 1:00 p.m. on 03/19/93 at BOYS STATE TOURNEY GAME 9
Produced by the KHSAA Sweet Sixteen Stat Crew with FINAL III - a Product of LEXICON

				PLEASURE RIDGE PARK		Time	Score	KNOTT COUNTY CENTRAL					
Player	Team								Player	Team			
MACKLIN,DANYELL,LINVILLE,	MATT ,KELLY, RAMONE,STANDARD, D.,TAYLOR, CHARLIE							COUCH, RONDEL,SLONE, DAVID,CODY, GEOFF,COUCH, KEVIN,AMBURGEY, BYRON	Ball to PATRIOTS				
1-1	1	100%	1-2	50.0%	Foul on TAYLOR, CHARLIE	1	6:47						
	1		1		Layup Off Fast Break by KELLY, RAMONE	1	6:31	*2-0					
					Assist by TAYLOR, CHARLIE								
1-2	50.0%	1-2	50.0%	LINVILLE, MATT , 2 Free Throws missed 1st made 2nd		1	6:00		Foul on CODY, GEOFF	1		1	
						1	6:00	*3-0					
						1	5:53	3-2*	Layup Off Fast Break by CODY, GEOFF	1-2	50.0%	1-4	25.0%
2-2	100%	2-5	40.0%	Layup Off Fast Break by KELLY, RAMONE		1	5:38	*5-2					
	2		2		Assist by TAYLOR, CHARLIE								
1-1	100%	3-7	42.8%	3 pt 21 ft Left Angle Jump shot by MACKLIN,DANYELL		1	5:16	5-4*	Layup Off Fast Break by SLONE, DAVID	1-2	50.0%	2-5	40.0%
	3		3		Assist by TAYLOR, CHARLIE	1	4:52	5-7*	Assist by AMBURGEY, BYRON	1		1	
3-3	100%	4-8	50.0%	3 pt 23 ft Left Angle Jump shot by KELLY, RAMONE		1	4:25	*8-7	3 pt 22 ft Right Side Jump shot by COUCH, KEVIN	1-1	100%	3-6	50.0%
	4		4		Assist by TAYLOR, CHARLIE	1	3:52	*11-7	Assist by COUCH, RONDEL	1		2	
					Sub In: WELLS, STEVE Out: KELLY, RAMONE	1	3:29						
					Sub In: ALEXANDER,CRAIG Out: MACKLIN,DANYELL	1	3:29		Sub In: HALL, SHAWN Out: SLONE, DAVID				
1-3	33.3%	5-9	55.5%	19 ft Left Angle Jump shot by STANDARD, D.		1	3:26	*13-7					
	1		5		Assist by LINVILLE, MATT	1	2:52						
	2		2		Foul on TAYLOR, CHARLIE	1	2:52		COUCH, KEVIN, 2 Free Throws missed both	0-2	00.0%	0-2	00.0%
					Sub In: MACKLIN,DANYELL Out: LINVILLE, MATT	1	2:52						
					Sub In: KELLY, RAMONE Out: TAYLOR, CHARLIE	1	2:52		Sub In: SLONE, DAVID Out: COUCH, RONDEL				
2-2	100%	6-11	54.5%	Alley Oop Layup by MACKLIN,DANYELL		1	2:15	13-9*	14 ft Lane Jump shot by CODY, GEOFF	2-3	66.6%	4-10	40.0%
	1		6		Assist by WELLS, STEVE	1	2:15		Assist by HALL, SHAWN	1		3	
						1	1:45	*15-9					
						1	0:58	15-11*	9 ft Lane Turnaround by CODY, GEOFF	3-4	75.0%	5-12	41.6%
						1	0:48		Foul on HALL, SHAWN	1		2	
					Sub In: LINVILLE, MATT Out: ALEXANDER,CRAIG	1	0:48						
2-2	100%	3-4	75.0%	MACKLIN,DANYELL, 2 Free Throws made both		1	0:48		Sub In: GIBSON, RYAN Out: SLONE, DAVID				
						1	0:48	*17-11					

Player	Team	PLEASURE RIDGE PARK
STANDARD, D., KELLY, RAMONE		MACKLIN, DANYELL, LINVILLE, MATT, WELLS, STEVE
1-2	50.0% 7-15 46.6%	8 ft Left Side Jump shot by LINVILLE, MATT
2-3	66.6% 8-17 47.0%	6 ft Lane Turnaround by LINVILLE, MATT Sub In: TAYLOR, CHARLIE Out: KELLY, RAMONE Sub In: ALEXANDER, CRAIG Out: MACKLIN, DANYELL Sub In: MACKLIN, DANYELL Out: STANDARD, D.
2-4	50.0% 4-6 66.6%	LINVILLE, MATT, 2 Free Throws missed 1st made 2nd
1-2	50.0% 9-20 45.0%	3 pt 23 ft Left Angle Jump shot by TAYLOR, CHARLIE Assist by WELLS, STEVE

Time	Score	KNOTT COUNTY CENTRAL	Player	Team
2 7:42	*19-11			
2 7:31	19-13*	4 ft Lane SHOT Off Fast Break by SLONE, DAVID Assist by AMBURGEY, BYRON	2-3	66.6% 6-13 46.1%
2 7:20	*21-13		2	4
2 6:57				
2 6:57				
2 6:09		Foul on HALL, SHAWN	2	3
2 6:09				
2 6:09	*22-13	Sub In: COUCH, RONDEL Out: HALL, SHAWN		
2 5:47	*25-13			

REB: 14 A: 7 BLK: 0 TO: 3 PF: 2
S: 2 FT: 4-6 66.6% FG: 9-20 45.0% T I M E - O U T

1	3	Foul on ALEXANDER, CRAIG Sub In: STANDARD, D. Out: WELLS, STEVE Sub In: KELLY, RAMONE Out: ALEXANDER, CRAIG
2-3	66.6% 10-22 45.4%	14 ft Lane Jump shot by TAYLOR, CHARLIE
3-5	60.0% 11-23 47.8%	Alley Oop Dunk by MACKLIN, DANYELL Assist by TAYLOR, CHARLIE
5	8	
1	4	Foul on STANDARD, D. Sub In: ALEXANDER, CRAIG Out: MACKLIN, DANYELL
1-2	50.0% 12-24 50.0%	Layup Off Fast Break by ALEXANDER, CRAIG Assist by KELLY, RAMONE
1	9	
		Sub In: MACKLIN, DANYELL Out: LINVILLE, MATT Sub In: WELLS, STEVE Out: TAYLOR, CHARLIE ALEXANDER, CRAIG, 1 Free Throw made
1-1	100% 5-7 71.4%	Layup Off Fast Break by KELLY, RAMONE
4-7	57.1% 13-25 52.0%	Assist by MACKLIN, DANYELL
1	10	

2 5:44		Sub In: GIBSON, RYAN Out: COUCH, KEVIN		
2 5:05				
2 4:54				
2 4:54				
2 4:54		Sub In: COUCH, KEVIN Out: GIBSON, RYAN		
2 4:54	*27-13			
2 4:27	*29-13			
2 4:04				
2 4:00				
2 4:00	29-16*	3 pt 22 ft Right Side Jump shot by AMBURGEY, BYRON Assist by COUCH, KEVIN	1-4	25.0% 7-16 43.7%
2 3:13	*31-16		1	5
2 3:13		Foul on AMBURGEY, BYRON	1	4
2 3:13				
2 3:13		Sub In: GIBSON, RYAN Out: AMBURGEY, BYRON		
2 3:13				
2 3:13	*32-16			
2 2:58	*34-16			
2 2:58		Foul on COUCH, RONDEL	1	5

REB: 16 A: 10 BLK: 0 TO: 5 PF: 4
S: 5 FT: 5-7 71.4% FG: 13-25 52.0% T I M E - O U T

1-1	100% 6-8 75.0%	KELLY, RAMONE, 1 Free Throw made Foul on WELLS, STEVE
1	5	
4-6	66.6% 14-26 53.8%	6 ft Lane Jump shot by MACKLIN, DANYELL Assist by KELLY, RAMONE Sub In: RICKETTS, JASON Out: KELLY, RAMONE
2	11	
0-2	00.0% 6-10 60.0%	STANDARD, D., 2 Free Throws missed both Sub In: LINVILLE, MATT Out: ALEXANDER, CRAIG
5-7	71.4% 15-27 55.5%	Alley Oop Reverse Lay Up by MACKLIN, DANYELL Assist by WELLS, STEVE
3	12	
1-2	50.0% 7-12 58.3%	WELLS, STEVE, 1 & Bonus made 1st missed 2nd
4	7	Bad Pass by STANDARD, D.

2 2:58	*35-16			
2 2:47				
2 2:47	35-18*	CODY, GEOFF, 2 Free Throws made both Foul on GIBSON, RYAN	2-2	100% 2-4 50.0%
2 2:41			1	6
2 2:35	*37-18			
2 2:22				
2 1:44	37-20*	6 ft Lane Follow by COUCH, RONDEL Foul on COUCH, KEVIN	1-5	20.0% 8-18 44.4%
2 1:32			1	7
2 1:32				
2 1:32				
2 1:18	*39-20			
2 0:56	39-22*	Layup Off Fast Break by COUCH, RONDEL Foul on GIBSON, RYAN	2-7	28.5% 9-20 45.0%
2 0:06			2	8
2 0:06	*40-22			
2 0:00		Traveling Violation on COUCH, KEVIN	5	12
2 0:00				

Official Boxscore * OFFICIAL FIRST HALF * Date: 03-19-93 Site:BOYS STATE TOURNEY GAME 9

VISITORS (Last Name, First)

NO.	KNOTT COUNTY CENTRAL	Tot FG		3-POINT		FT	FTA	Rebounds			PF	TP	A	TO	BLK	S	TIME	
		FG	FGA	FG	FGA			OFF	DEF	TOT								
24	COUCH, RONDEL	2	7	0	2	0	0	1	1	2	1	4	1	1	0	0	11:54	
44	SLONE, DAVID	2	3	0	0	0	0	0	0	0	0	4	0	0	0	0	14:01	
04	CODY, GEOFF	3	4	0	0	2	2	0	1	1	1	8	0	1	0	0	16:00	
12	COUCH, KEVIN	1	2	1	2	0	2	1	2	3	1	3	1	5	0	1	15:10	
14	AMBURGEY, BYRON	1	4	1	2	0	0	1	2	3	1	3	2	4	0	1	12:47	
34	HALL, SHAWN	0	0	0	0	0	0	0	0	0	2	0	1	0	1	0	5:17	
20	GIBSON, RYAN	0	0	0	0	0	0	0	0	0	2	0	0	0	0	0	4:51	
TEAM REBOUNDS (INCLUDED IN TOTALS)																		
TOTALS		9	20	2	6	2	4	3	6	9	8	22	5	12	1	2	80	
TOTAL FG 1st HALF 5/12		41.7%		2nd HALF 4/8		50.0%		GAME			9/20		45.0%		DEADBALL			
3-POINT FG 1st HALF 1/3		33.3%		2nd HALF 1/3		33.3%		GAME			2/6		33.3%		REBOUNDS		1	
FREE THROWS 1st HALF 0/2		0.0%		2nd HALF 2/2		100.0%		GAME			2/4		50.0%					

HOME (Last Name, First)

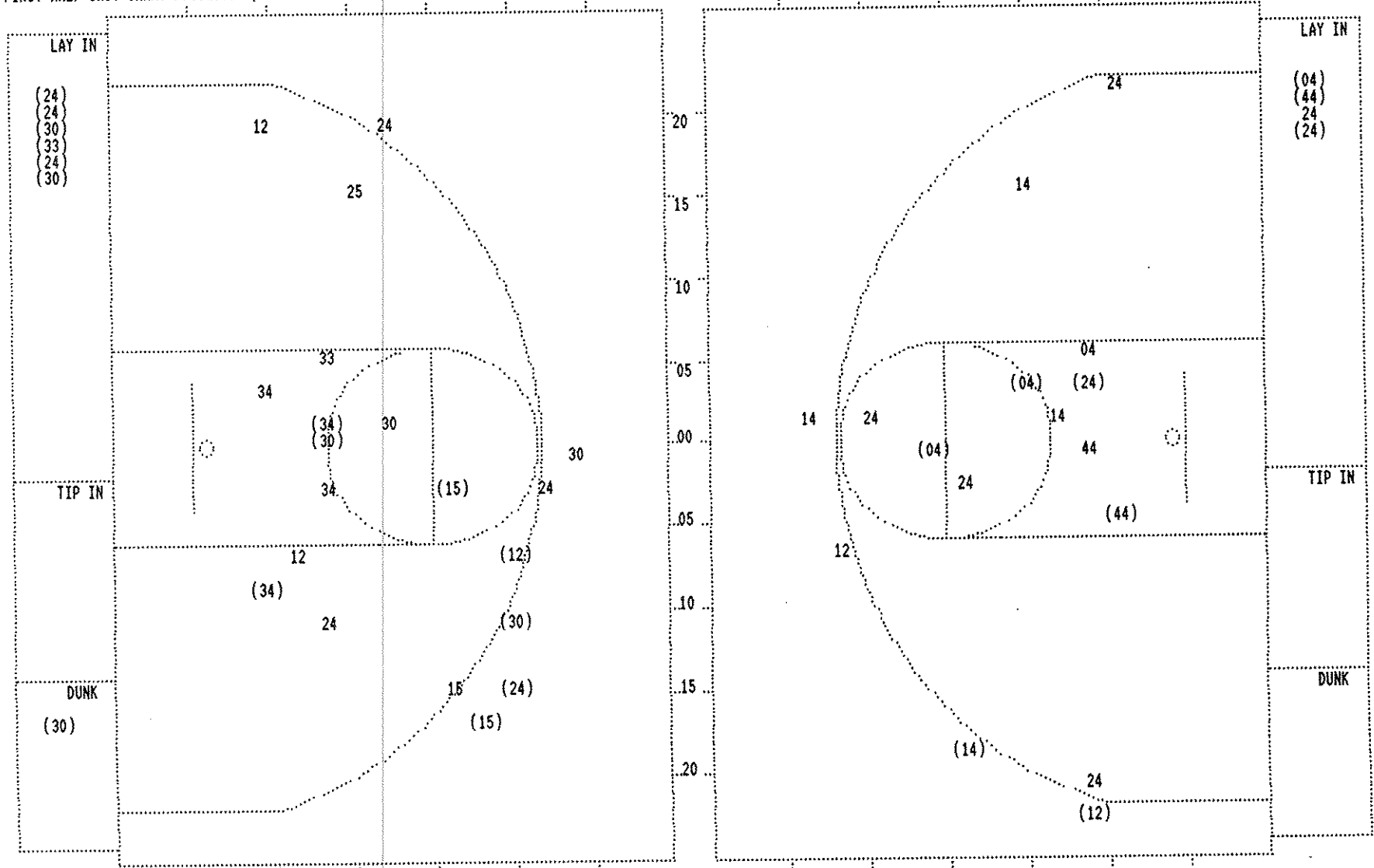
NO.	PLEASURE RIDGE PARK	Tot FG		3-POINT		FT	FTA	Rebounds			PF	TP	A	TO	BLK	S	TIME	
		FG	FGA	FG	FGA			OFF	DEF	TOT								
30	HACKLIN, DANYELL	5	7	1	2	2	2	2	5	7	0	13	1	1	0	2	13:48	
34	LYNVILLE, MATT	2	4	0	0	2	4	3	2	5	0	6	1	0	0	0	12:15	
24	KELLY, RAMONE	4	7	1	3	1	1	1	0	1	0	10	2	0	0	1	10:58	
12	STANDARD, D.	1	3	0	1	0	2	1	0	1	1	2	0	4	0	1	14:45	
15	TAYLOR, CHARLIE	2	3	1	2	0	0	0	1	1	2	5	5	1	0	1	8:52	
25	WELLS, STEVE	0	1	0	0	1	2	0	1	1	1	1	3	1	0	0	9:48	
33	ALEXANDER, CRAIG	1	2	0	0	1	1	0	0	0	1	3	0	0	0	0	7:12	
20	RICKETTS, JASON	0	0	0	0	0	0	0	0	0	0	0	0	0	0	0	2:22	
TEAM REBOUNDS (INCLUDED IN TOTALS)																		
TOTALS		15	27	3	8	7	12	8	9	17	5	40	12	7	0	5	80	
TOTAL FG 1st HALF 6/14		42.9%		2nd HALF 9/13		69.2%		GAME			15/27		55.6%		DEADBALL			
3-POINT FG 1st HALF 2/5		40.0%		2nd HALF 1/3		33.3%		GAME			3/8		37.5%		Rebounds		3	
FREE THROWS 1st HALF 3/4		75.0%		2nd HALF 4/8		50.0%		GAME			7/12		58.3%					

OFFICIALS: C.B. AKINS, CURTIS KING, ALT-GLENN BROWN SCORE BY PERIODS
 Technicals: None KNOTT COUNTY CENTRAL 11 11 = 22
 PLEASURE RIDGE PARK 17 23 = 40

Attendance:

COMMENTS: POINTS OFF TURNOVERS SECOND CHANCE POINTS
 KNOTT COUNTY CENTRAL 9 PLEASURE RIDGE PARK 16 KNOTT COUNTY CENTRAL 4 PLEASURE RIDGE PARK 7
 Produced by the KHSAA Sweet Sixteen Stat Crew with FINAL III - a Product of LEXICON SPORTS™

FIRST HALF SHOT CHART Produced by the KHSAA Sweet Sixteen Stat Crew with FINAL III - a Product of LEXICON SPORTS™



PLEASURE RIDGE PARK					
Player			Player		
30 - MACKLIN, DA	5 / 7	71.4%	25 - WELLS, STE	0 / 1	0.0%
34 - LINVILLE,	2 / 4	50.0%	33 - ALEXANDER,	1 / 2	50.0%
24 - KELLY, RAM	4 / 7	57.1%			
12 - STANDARD,	1 / 3	33.3%			
15 - TAYLOR, CH	2 / 3	66.6%			
Layups	1-9 Ft	10-15 Ft	Over 15 Ft	3 Pointers	Total
7 / 7	3 / 7	1 / 3	1 / 2	3 / 8	15 / 27
100.0%	42.9%	33.3%	50.0%	37.5%	55.6%

KNOTT COUNTY CENTRAL					
Player			Player		
24 - COUCH, RON	2 / 7	28.5%			
44 - SLOAN, DAV	2 / 3	66.7%			
04 - CODY, GEOFF	3 / 4	75.0%			
12 - COUCH, KEV	1 / 2	50.0%			
14 - AMBURGEY,	1 / 4	25.0%			
Layups	1-9 Ft	10-15 Ft	Over 15 Ft	3 Pointers	Total
3 / 4	3 / 6	1 / 2	0 / 2	2 / 6	9 / 20
75.0%	50.0%	50.0%	0.0%	33.3%	45.0%

KNOTT COUNTY CENTRAL "PATRIOTS" vs PLEASURE RIDGE PARK "PANTHERS"
 2nd Half Play by Play

PAGE : 1

Tip off at 1:00 p.m. on 03/19/93 at BOYS STATE TOURNEY GAME 9
 Produced by the KHSAA Sweet Sixteen Stat Crew with FINAL III - a Product of LEXICON

Player	Team	PLEASURE RIDGE PARK	Time	Score	KNOTT COUNTY CENTRAL	Player	Team
MACKLIN,DANYELL,LINVILLE,		MATT ,KELLY, RAMONE,STANDARD, D.,TAYLOR, CHARLIE			COUCH, RONDEL,SLONE, DAVID,CODY, GEOFF,COUCH, KEVIN,AMBURGEY, BYRON		
			3 7:51	40-24*	Ball to PATRIOTS	2-5	40.0% 10-21 47.6%
			3 7:40		12 ft Left Side Bank by AMBURGEY, BYRON	2	1
3-4 75.0% 8-14 57.1%	1	MACKLIN,DANYELL, 2 Free Throws made 1st missed 2nd	3 7:40	*41-24	Foul on COUCH, KEVIN		
	1	Foul on MACKLIN,DANYELL	3 6:40				
			3 5:38		Foul on COUCH, RONDEL	2	2
3-3 100% 10-16 62.5%		KELLY, RAMONE, 2 Free Throws made both	3 5:38	*43-24			
			3 5:26		Foul on CODY, GEOFF	2	3
4-6 66.6% 11-18 61.1%	2	MACKLIN,DANYELL, 2 Free Throws missed 1st made 2nd	3 5:26	*44-24			
	2	Foul on MACKLIN,DANYELL	3 5:05				
	2	Foul on STANDARD, D.	3 4:46		Foul on AMBURGEY, BYRON	2	4
			3 4:46		Sub In: CRAFT, HAROLD Out: AMBURGEY, BYRON		
6-8 75.0% 16-33 48.4%	2	Alley Oop Layup by MACKLIN,DANYELL	3 4:46	*46-24			
	13	Assist by LINVILLE, MATT					
	3	Foul on STANDARD, D.	3 4:09	46-26*	4 ft Lane Follow by CODY, GEOFF	4-6	66.6% 11-26 42.3%
	4	Sub In: WELLS, STEVE Out: STANDARD, D.	3 3:46				
			3 3:46				
6-8 75.0% 13-20 65.0%		MACKLIN,DANYELL, 2 Free Throws made both	3 3:32	*48-26	Foul on CODY, GEOFF	3	5
1-2 50.0% 17-35 48.5%	3	Layup Off Fast Break by WELLS, STEVE	3 3:32	*48-26			
	14	Assist by KELLY, RAMONE	3 3:20	*50-26			
1-3 33.3% 13-21 61.9%		WELLS, STEVE, 1 Free Throw missed	3 3:19		Foul on COUCH, KEVIN	3	6
5-10 50.0% 18-36 50.0%		Layup Off Fast Break by KELLY, RAMONE	3 3:19				
			3 3:07	*52-26			
			3 2:44		Sub In: WILLIAMS,JARVIS Out: COUCH, KEVIN		
		Sub In: ALEXANDER,CRAIG Out: MACKLIN,DANYELL	3 2:44				
2-3 66.6% 19-37 51.3%	4	Driving Layup by WELLS, STEVE	3 2:13	*54-26			
	15	Assist by KELLY, RAMONE					
6-11 54.5% 20-38 52.6%	6	Dunk Off Fast Break by KELLY, RAMONE	3 1:53	*56-26			
	16	Assist by TAYLOR, CHARLIE					
3-6 50.0% 21-39 53.8%	7	Layup Off Fast Break by LINVILLE, MATT	3 1:31	*58-26			
	17	Assist by TAYLOR, CHARLIE					
7-12 58.3% 22-40 55.0%	8	Layup Off Fast Break by KELLY, RAMONE	3 1:05	*60-26			
	18	Assist by TAYLOR, CHARLIE					
			3 1:02				
		REB: 22 A: 18 BLK: 2 TO: 8 PF: 4	3 1:02		REB: 17 A: 5 BLK: 1 TO: 22 PF: 6		
		S: 13 FT: 13-21 61.9% FG: 22-40 55.0%		T I M E - O U T	KNOTT COUNTY CENTRAL No. 1	S: 3 FT: 2-4 50.0% FG: 11-29 37.9%	
		Sub In: HAMILTON, ERIC Out: WELLS, STEVE	3 1:02				
		Sub In: RICKETTS, JASON Out: KELLY, RAMONE	3 1:02		Sub In: GIBSON, RYAN Out: CRAFT, HAROLD		
	5	Foul on RICKETTS, JASON	3 0:56				
			3 0:17	60-28*	12 ft Left Side Jump shot by COUCH, RONDEL	3-9	33.3% 12-30 40.0%
			3 0:09		Foul on CODY, GEOFF	4	7
1-2 50.0% 14-23 60.8%		HAMILTON, ERIC , 2 Free Throws missed 1st made 2nd	3 0:09	*61-28			

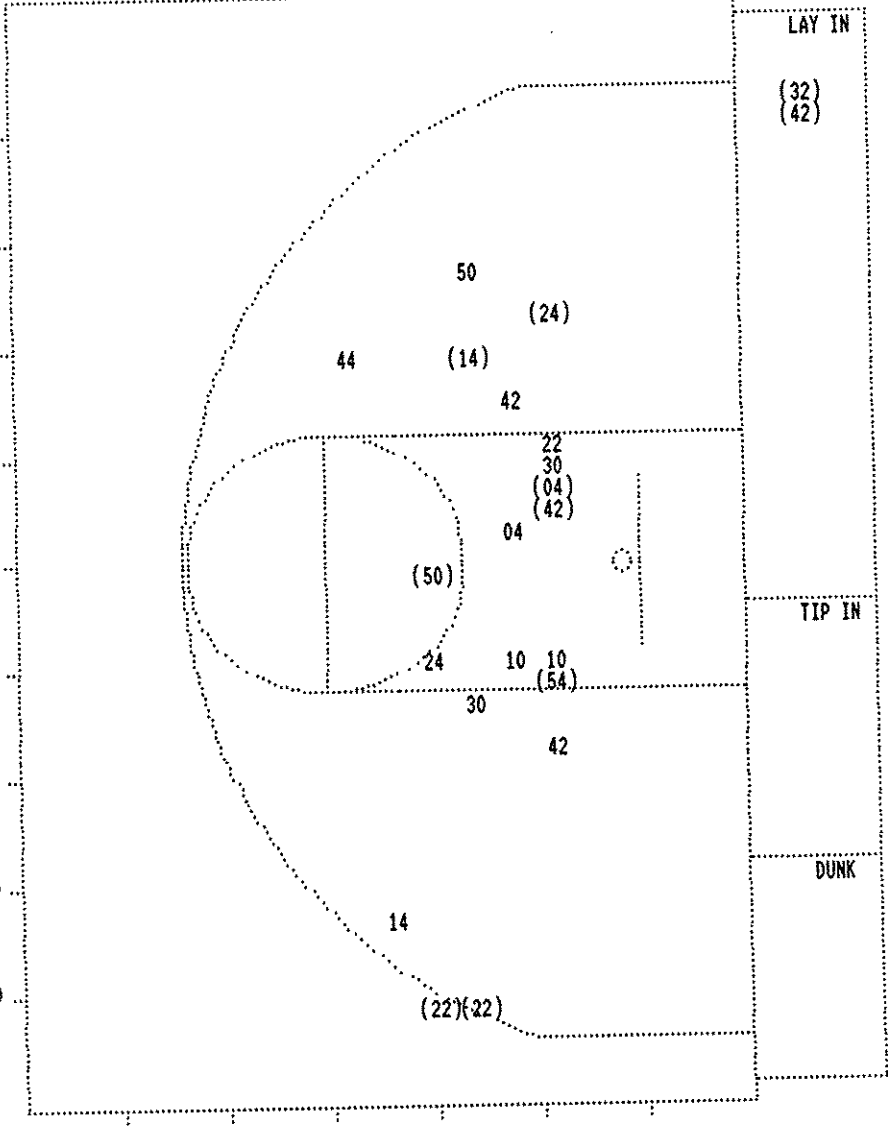
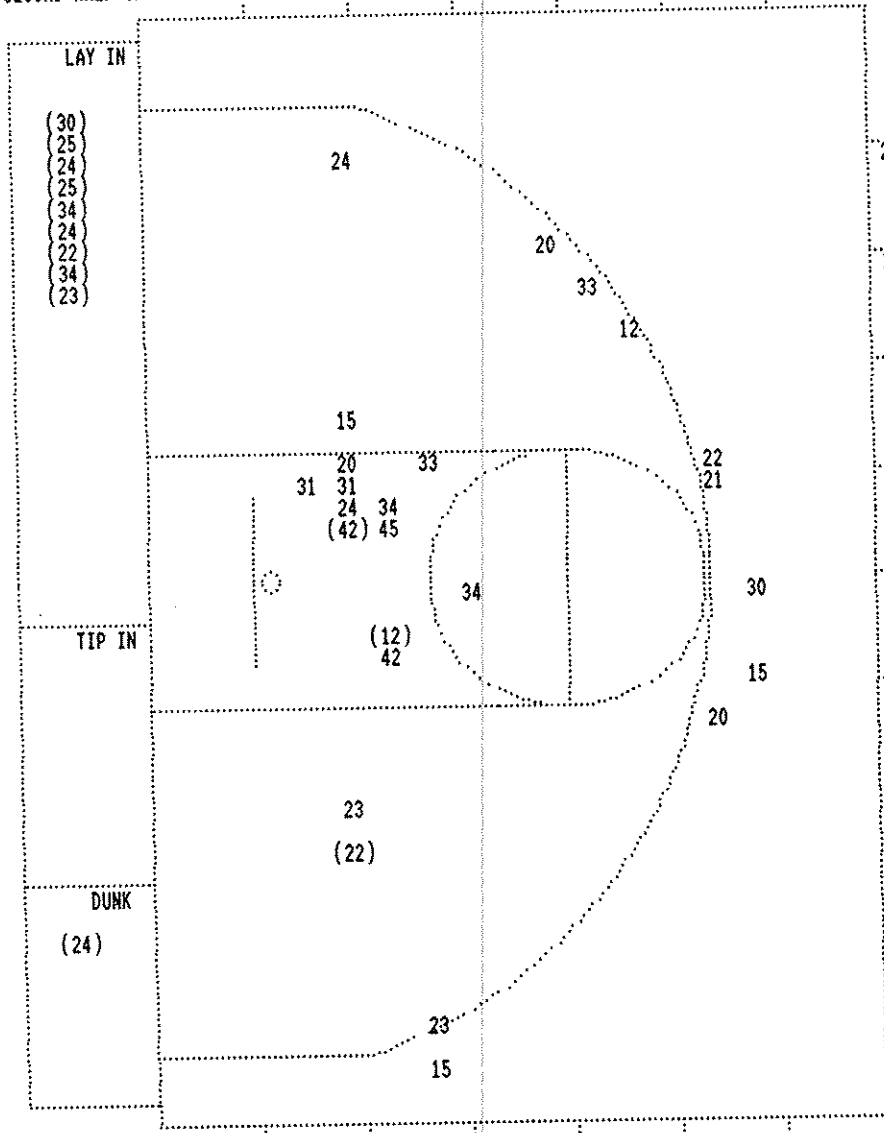
KNOTT COUNTY CENTRAL "PATRIOTS" vs PLEASURE RIDGE PARK "PANTHERS"
2nd Half Play by Play

PAGE : 2

Tip off at 1:00 p.m. on 03/19/93 at BOYS STATE TOURNEY GAME 9
Produced by the KHSAA Sweet Sixteen Stat Crew with FINAL III - a Product of LEXICON SPOK

PLEASURE RIDGE PARK				Time	Score	KNOTT COUNTY CENTRAL	Player	Team
STANDARD, D., HAMILTON, ERIC, LINVILLE, MATT, RICKETTS, JASON, ALEXANDER, CRAIG						COUCH, RONDEL, GIBSON, RYAN, SLONE, DAVID, CODY, GEOFF, WILLIAMS, JARVIS		
1-1	100%	23-44	52.2%	Layup Off Fast Break by HAMILTON, ERIC	4 7:52	*63-28		
				Assist by RICKETTS, JASON				
2-4	50.0%	24-45	53.3%	4 ft Lane Driving by STANDARD, D.	4 7:39	*65-28		
4-8	50.0%	25-48	52.0%	Follow Layup by LINVILLE, MATT	4 7:10	*67-28		
					4 7:10		3	8
					4 7:10	Foul on COUCH, RONDEL		
					4 7:10	Sub In: PARTIN, JEREMY Out: SLONE, DAVID		
3-5	60.0%	15-24	62.5%	LINVILLE, MATT, 1 Free Throw made	4 7:10	*68-28		
				Sub In: LOCKHART, MIKEE Out: LINVILLE, MATT	4 7:10			
					4 7:06	Sub In: WATTS, AARON Out: CODY, GEOFF		
					4 6:55	Sub In: SUMNER, BRIAN Out: GIBSON, RYAN		
					4 6:55	Sub In: CENTERS, SHAWN Out: COUCH, RONDEL		
				Sub In: ASHFORD, GOLDI Out: STANDARD, D.	4 6:55			
					4 6:46	Foul on WILLIAMS, JARVIS	1	9
1-1	100%	26-50	52.0%	4 ft Lane Bank by LOCKHART, MIKEE	4 6:24	*70-28		
				Assist by ASHFORD, GOLDI				
					4 6:05	70-31*	3 pt 21 ft Right Side Jump shot by SUMNER, BRIAN	1-1 100% 13-31 41.9%
							Assist by CENTERS, SHAWN	1 6
					4 5:34	*72-31	Foul on WATTS, AARON	1 10
3-3	100%	17-26	65.3%	ALEXANDER, CRAIG, 2 Free Throws made both	4 5:22			
				Foul on ASHFORD, GOLDI	4 5:14			
				Sub In: SCHLATTER, JASON Out: ALEXANDER, CRAIG	4 4:17			
					4 4:17	Foul on CENTERS, SHAWN	1	11
2-4	50.0%	18-28	64.2%	HAMILTON, ERIC, 2 Free Throws made 1st missed 2nd	4 4:17	*73-31		
2-3	66.6%	27-56	48.2%	12 ft Left Side Jump shot by HAMILTON, ERIC	4 3:51	*75-31		
					4 3:41	75-34*	3 pt 22 ft Right Side Jump shot by SUMNER, BRIAN	2-3 66.6% 14-33 42.4%
							Assist by WATTS, AARON	1 7
					4 3:37		Foul on WATTS, AARON	2 12
					4 3:37		Sub In: PATRICK, ANTHONY Out: WATTS, AARON	
				Sub In: HOOVER, SHAWN Out: LOCKHART, MIKEE	4 3:37			
4-6	66.6%	20-30	66.6%	HAMILTON, ERIC, 1 & Bonus made both	4 3:37	*77-34		
				Sub In: MIMMS, LARON Out: HAMILTON, ERIC	4 3:37			
				Foul on HOOVER, SHAWN	4 3:29			
					4 3:29		Sub In: HALL, TODD Out: WILLIAMS, JARVIS	
1-2	50.0%	28-57	49.1%	Layup Off Fast Break by ASHFORD, GOLDI	4 3:29	77-35*	CENTERS, SHAWN, 2 Free Throws missed 1st made 2nd	1-2 50.0% 3-6 50.0%
					4 3:14	*79-35		
					4 3:04	79-37*	8 ft Lane Bank by HALL, TODD	1-1 100% 15-34 44.1%
					4 3:03			
					4 3:03	79-38*	HALL, TODD, 1 Free Throw made	1-1 100% 4-7 57.1%
					4 3:02			
					4 2:57	79-40*	4 ft Lane Follow by CENTERS, SHAWN	1-1 100% 16-36 44.4%
					4 2:27			
					4 2:17		Sub In: WATTS, AARON Out: SUMNER, BRIAN	
					4 1:49	79-42*	Driving Layup by PATRICK, ANTHONY	1-1 100% 17-38 44.7%
					4 1:49			
					4 1:48		PATRICK, ANTHONY, 1 Free Throw missed	0-1 00.0% 4-8 50.0%
					4 1:43	79-44*	4 ft Lane Follow by PARTIN, JEREMY	1-1 100% 18-39 46.1%
					4 1:22		Sub In: WILLIAMS, JARVIS Out: PATRICK, ANTHONY	
					4 1:12			
					4 1:12	79-45*	WILLIAMS, JARVIS, 2 Free Throws missed 1st made 2nd	1-2 50.0% 5-10 50.0%
					4 0:32			
					4 0:32	79-47*	CENTERS, SHAWN, 1 & Bonus made both	3-4 75.0% 7-12 58.3%
					4 0:17		Foul on HALL, TODD	1 13
1-2	50.0%	21-32	65.6%	MIMMS, LARON, 2 Free Throws made 1st missed 2nd	4 0:16	*80-47		
					4 0:09		Foul on CENTERS, SHAWN	2 14
2-2	100%	23-34	67.6%	ASHFORD, GOLDI, 2 Free Throws made both	4 0:09	*82-47		
					4 0:00	82-49*	Driving Layup by CENTERS, SHAWN, made	2-4 50.0% 19-42 45.2%
							Assist by WILLIAMS, JARVIS	1 8

SECOND HALF SHOT CHART Produced by the KHSAA Sweet Sixteen Stat Crew with FINAL III - a Product of LEXICON SPORTS™



PLEASURE RIDGE PARK

Player	1-9 Ft	10-15 Ft	Over 15 Ft	3 Pointers Total
30 - MACKLIN, DA	1 / 2	50.0%	20 - RICKETTS, 0 / 3 0.0%	31 - MITCHELL, 0 / 2 0.0%
34 - LINVILLE, 2 / 4	50.0%	21 - MIMMS, LaR 0 / 1 0.0%	33 - ALEXANDER, 0 / 2 0.0%	
24 - KELLY, RAH 3 / 5	60.0%	22 - HAMILTON, 2 / 3 66.6%	42 - LOCKHART, 1 / 2 50.0%	
12 - STANDARD, 1 / 2	50.0%	23 - ASHFORD, G 1 / 3 33.3%	45 - SCHLATTER, 0 / 1 0.0%	
15 - TAYLOR, CH 0 / 3	0.0%	25 - WELLS, STE 2 / 2 100.0%		
Layups	1-9 Ft	10-15 Ft	Over 15 Ft	3 Pointers Total
10 / 10	2 / 12	1 / 2	0 / 11	13 / 35
100.0%	16.7%	50.0%	0.0%	37.1%

KNOTT COUNTY CENTRAL

Player	1-9 Ft	10-15 Ft	Over 15 Ft	3 Pointers Total
24 - COUCH, RON	1 / 2	50.0%	22 - SUMNER, BR 2 / 3 66.6%	54 - PARTIN, JE 1 / 1 100.0%
44 - SLONE, DAV	0 / 1	0.0%	30 - WILLIAMS, J 0 / 2 0.0%	
04 - CODY, GEOFF	1 / 2	50.0%	32 - PATRICK, AN 1 / 1 100.0%	
14 - AMBURGEY, 1 / 2	50.0%	42 - CENTERS, S 2 / 4 50.0%		
10 - CRAFT, HAR 0 / 2	0.0%	50 - HALL, TODD 1 / 2 50.0%		
Layups	1-9 Ft	10-15 Ft	Over 15 Ft	3 Pointers Total
2 / 2	4 / 13	2 / 3	0 / 2	2 / 2
100.0%	30.8%	66.7%	0.0%	100.0%